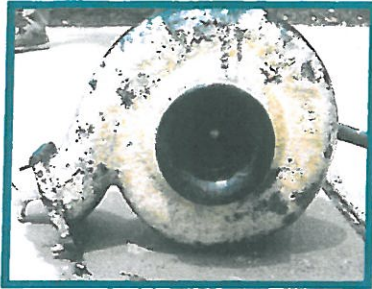




Osakis Public Works Department Notice to Residents

For questions please call the Public Works Dept at 859-1205

This is your sanitary sewer pump:



This is your sanitary sewer pump on "flushable" wipes:



NO WIPES IN THE PIPES

DID YOU KNOW?

- Most sewer spills are preventable and are the result of misuse of the sewer system.
- Flushed baby wipes and other items cause tens of thousands of dollars in damage each year and do not break down in the sewer system.
- Flushing anything other than human waste and toilet paper down the toilet can damage household plumbing, the environment and the wastewater system.

OK to flush:

Human waste
Toilet paper



NOT OK to flush:

Baby wipes, including "flushable wipes, paper towels, cotton swabs, condoms, Tampons/pads, tissue/kleenex, dental floss, diapers, cleaning pads/wipes, medication



"FLUSHABLE" WIPES AREN'T FLUSHABLE

Remember the 3 P's only in the toilet: Pee, Poo and (toilet) paper